



CUSTOMER:

Customer Name: ALINVEST CZ

PROJECT:

Project Code: E2558

Project Name: ALINVEST CZ

DOCUMENT INFORMATION:


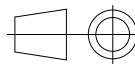
Document Title: Equipment Spider Diagram

Customer File Name: 2558-3311-HGS-E-DWG-SPD

Customer Revision Number: A

Customer File Name: 2558-3311-HGS-E-DWG-SPD

Contractor Revision Number: A

						CONTRACTOR		CONTRACTOR dwg number	Rev. A	Project Code E2558	Project Name ALINVEST CZ						
								2558-3311-HGS-E-DWG-SPD		Document Title Equipment Spider Diagram			Scale 1:1				
A	01/12/2025	INITIAL VERSION			RORI			RORI		RORI	CLIENT			CLIENT dwg number	Rev. A	DESIGNED: ANSA	DRAWN: JOCA
Rev.	Date	Revisions description			Designed	Draw	Approved	2558-3311-HGS-E-DWG-SPD	DATE: 29/11/2025	DATE: 29/11/2025		DATE: 29/11/2025		Sheet 1 OF 7			
1																	
										</							

# POWER AND CONTROL PANEL


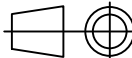
## r41.62-3311-HGS-GEN01-PCP01

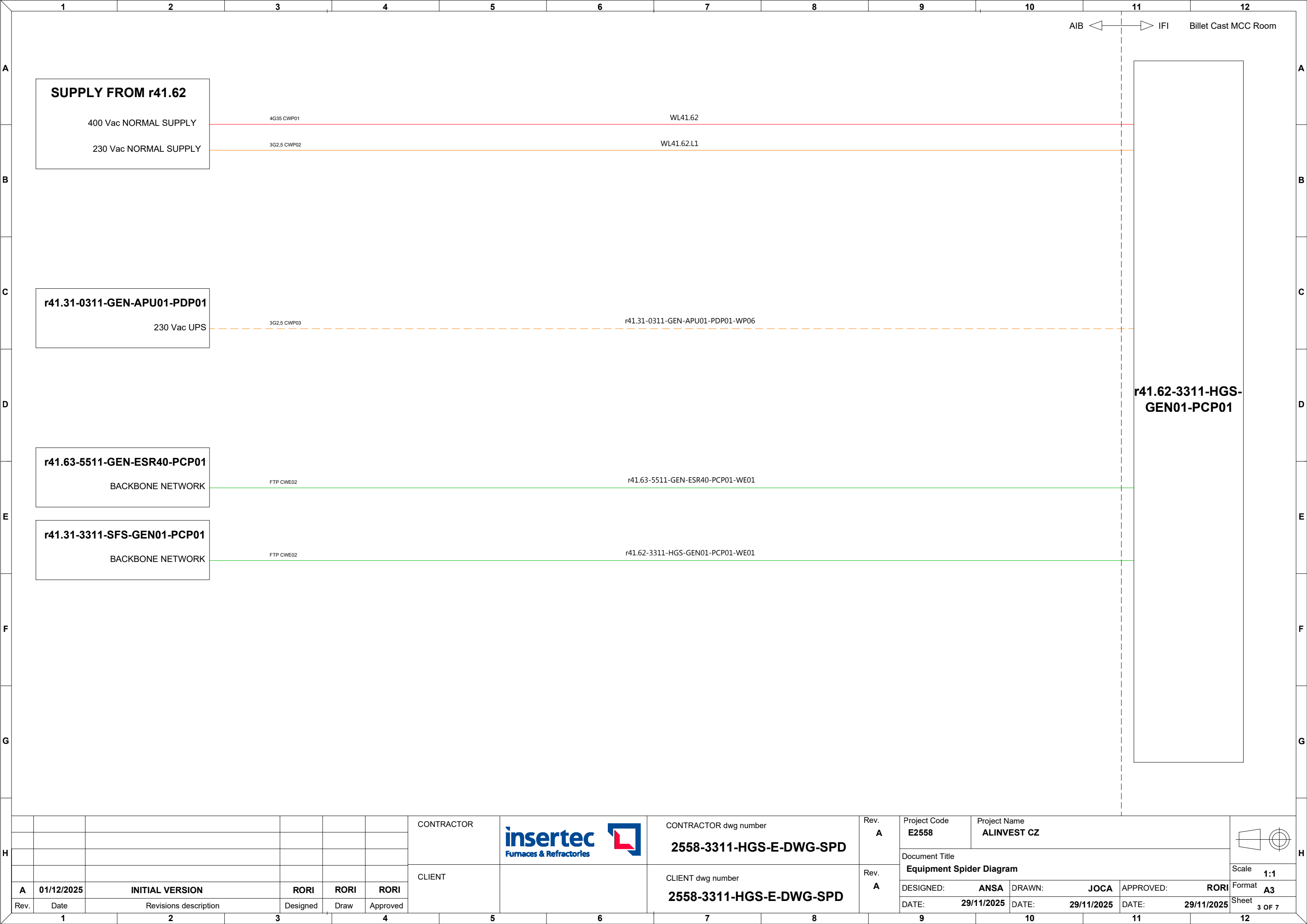
### LEGEND

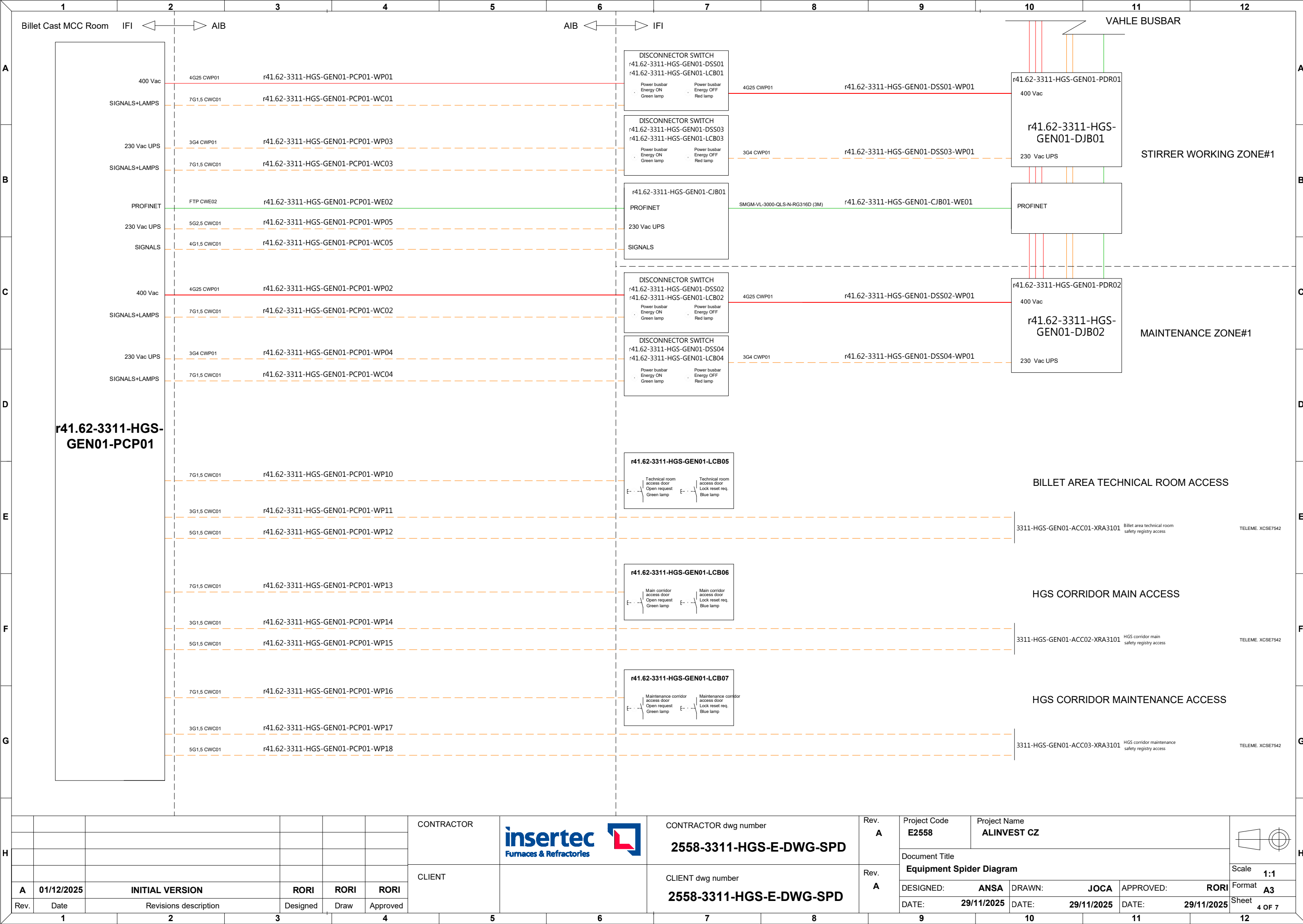
	400Vac Power supply		Regular control signals
	400Vac UPS power supply		Analog & shielded signals
	230Vac Power supply		T/C connection
	230Vac UPS power supply		Communication connection

### CATEGORY

Power cables
CWP01: Regular power cables
CWP02: Shielded power cable
CWP03: Flexible power cables
CWP04: Regular high temperature power cables
Instrumentation and control cables
CWC01: Regular instrumentation control cables
CWC02: Shielded instrumentation control cables
CWC03: Thermocouple cable
CWC04: Flexible instrumentation control cables
CWC05: High voltage cables for ignition transformers
CWC06: Regular high temperature instrumentation control cables
Communication cables
CWE01: Fieldbus communication cable (Inside cabinets)
CWE02: Fieldbus communication cable (Outside cabinets)
CWE03: Optic fibre communication cable

						CONTRACTOR		CONTRACTOR dwg number <b>2558-3311-HGS-E-DWG-SPD</b>	Rev. <b>A</b>	Project Code <b>E2558</b>	Project Name <b>ALINVEST CZ</b>			
										Document Title <b>Equipment Spider Diagram</b>			Scale <b>1:1</b>	
<b>A</b>	<b>01/12/2025</b>	<b>INITIAL VERSION</b>		<b>RORI</b>	<b>RORI</b>					<b>RORI</b>	DESIGNED: <b>ANSA</b>	DRAWN: <b>JOCA</b>	APPROVED: <b>RORI</b>	
Rev.	Date	Revisions description		Designed	Draw	Approved	CLIENT	CLIENT dwg number <b>2558-3311-HGS-E-DWG-SPD</b>	Rev. <b>A</b>	DATE: <b>29/11/2025</b>	DATE: <b>29/11/2025</b>	DATE: <b>29/11/2025</b>	Sheet <b>2 OF 7</b>	





# POWER INPUT & OUTPUT


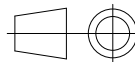
## r41.62-3311-HGS-TRS01-PIO01

### LEGEND

	400Vac Power supply		Regular control signals
	400Vac UPS power supply		Analog & shielded signals
	230Vac Power supply		T/C connection
	230Vac UPS power supply		Communication connection

### CATEGORY

Power cables
CWP01: Regular power cables
CWP02: Shielded power cable
CWP03: Flexible power cables
CWP04: Regular high temperature power cables
Instrumentation and control cables
CWC01: Regular instrumentation control cables
CWC02: Shielded instrumentation control cables
CWC03: Thermocouple cable
CWC04: Flexible instrumentation control cables
CWC05: High voltage cables for ignition transformers
CWC06: Regular high temperature instrumentation control cables
Communication cables
CWE01: Fieldbus communication cable (Inside cabinets)
CWE02: Fieldbus communication cable (Outside cabinets)
CWE03: Optic fibre communication cable

						CONTRACTOR		CONTRACTOR dwg number <b>2558-3311-HGS-E-DWG-SPD</b>	Rev. <b>A</b>	Project Code <b>E2558</b>	Project Name <b>ALINVEST CZ</b>			
										Document Title <b>Equipment Spider Diagram</b>			Scale <b>1:1</b>	
<b>A</b>	<b>01/12/2025</b>	<b>INITIAL VERSION</b>		<b>RORI</b>	<b>RORI</b>					<b>RORI</b>	DESIGNED: <b>ANSA</b>	DRAWN: <b>JOCA</b>	APPROVED: <b>RORI</b>	
Rev.	Date	Revisions description		Designed	Draw	Approved	CLIENT	CLIENT dwg number <b>2558-3311-HGS-E-DWG-SPD</b>	Rev. <b>A</b>	DATE: <b>29/11/2025</b>	DATE: <b>29/11/2025</b>	DATE: <b>29/11/2025</b>	Sheet <b>5 OF 7</b>	



	1	2	3	4	5	6	7	8	9	10	11	12
A	<div>Field area</div> <div> </div>											A
B	<div> <div>TC K CWC03</div> <div>r41.62-3311-HGS-TRS01-PCP01-WC01</div> <div>Rotation thermocouple</div> </div> <div> <div>2x1CWC02</div> <div>r41.62-3311-HGS-TRS01-PIO01-WC02</div> <div>3311-HGS-PMS01-GEN01-TE1001</div> </div> <div> <div>2x1CWC02</div> <div>r41.62-3311-HGS-TRS01-PCP01-WC03</div> <div>Cooling fan motor winding temperature M1A</div> </div> <div> <div>7G1CWC02</div> <div>r41.62-3311-HGS-TRS01-PIO01-WC04</div> <div>3311-HGS-ESR70-ACR01-TS0711</div> </div> <div> <div>3G1CWC01</div> <div>r41.62-3311-HGS-TRS01-PIO01-WC05</div> <div>Cooling fan motor winding temperature M1B</div> </div> <div> <div>3G1CWC01</div> <div>r41.62-3311-HGS-TRS01-PIO01-WC06</div> <div>3311-HGS-ESR70-ACR01-TS0712</div> </div> <div> <div>3G1CWC01</div> <div>r41.62-3311-HGS-TRS01-PIO01-WC28</div> <div>Translation encoder</div> </div> <div> <div>3G1CWC01</div> <div>r41.62-3311-HGS-TRS01-PIO01-WC29</div> <div>3311-HGS-TRS01-GEN01-ZE1203</div> </div> <div> <div>3G1CWP01</div> <div>r41.62-3311-HGS-TRS01-PIO01-WC07</div> <div>PMS up</div> </div> <div> <div>3G1CWP01</div> <div>r41.62-3311-HGS-TRS01-PIO01-WC08</div> <div>3311-HGS-TRS01-MVP01-ZS1214</div> </div> <div> <div>3G1CWC01</div> <div>r41.62-3311-HGS-TRS01-PIO01-WC09</div> <div>PMS down</div> </div> <div> <div>3G1CWC01</div> <div>r41.62-3311-HGS-TRS01-PIO01-WC10</div> <div>3311-HGS-TRS01-MVP01-ZS1215</div> </div> <div> <div>3G1CWC01</div> <div>r41.62-3311-HGS-TRS01-PIO01-WC22</div> <div>Traslation Limit Switch Forward</div> </div> <div> <div>3G1CWC01</div> <div>r41.62-3311-HGS-TRS01-PIO01-WC12</div> <div>3311-HGS-TRS01-GEN01-LS1201</div> </div> <div> <div>3G1CWC01</div> <div>r41.62-3311-HGS-TRS01-PIO01-WC14</div> <div>Traslation Limit Switch Backward</div> </div> <div> <div>5G1 CWC02</div> <div>r41.62-3311-HGS-TRS01-PCP01-WC15</div> <div>3311-HGS-TRS01-GEN01-LS1202</div> </div> <div> <div>5G1 CWC02</div> <div>r41.62-3311-HGS-TRS01-PCP01-WC16</div> <div>Solenoid valve PMS UP</div> </div> <div> <div>5G1 CWC02</div> <div>r41.62-3311-HGS-TRS01-PCP01-WC17</div> <div>3311-HGS-ESR40-HYG01-SV0410A</div> </div> <div> <div>12G1CWC01</div> <div>r41.62-3311-HGS-TRS01-PCP01-WC18</div> <div>Solenoid valve PMS DOWN</div> </div> <div> <div>12G1CWC01</div> <div>r41.62-3311-HGS-TRS01-PCP01-WC19</div> <div>3311-HGS-ESR40-HYG01-SV0401B</div> </div>											B
C	<div> <div>Emergency stop push-button</div> <div>3311-HGS-ESR40-HYG01-SV0401A</div> <div>Solenoid valve PMS up feedback</div> </div> <div> <div>Magnet</div> <div>3311-HGS-ESR40-HYG01-SV0401B</div> <div>Solenoid valve PMS down feedback</div> </div> <div> <div>Cooling fan</div> <div>3311-HGS-ESR40-GEN01-SV0401A</div> <div>Solenoid valve PMS down feedback</div> </div> <div> <div>Translation</div> <div>3311-HGS-ESR40-GEN01-SV0401B</div> <div>Oil Filter Pressure Trasmitter</div> </div> <div> <div>Hdraulic pump</div> <div>3311-HGS-ESR40-HYG01-PT0409</div> <div>Oil level switch Low</div> </div> <div> <div>Up/Down</div> <div>3311-HGS-ESR40-HYG01-LT0403</div> <div>Oil temperature trasmitter</div> </div>											C
D	<div> <div>Oil pressure trasmitter #1</div> <div>3311-HGS-ESR40-HYG01-TE0406</div> <div>Oil Pressure trasmitter #2</div> </div> <div> <div>Oil Pressure trasmitter #3</div> <div>3311-HGS-ESR40-GEN01-PT0407</div> <div>Oil Pressure trasmitter #3</div> </div> <div> <div>3311-HGS-ESR40-GEN01-PT0408</div> <div>3311-HGS-ESR40-GEN01-PT0408</div> <div>3311-HGS-ESR40-GEN01-PT0408</div> </div>											D
E	<div> <div>Front safety scanner</div> <div>3311-HGS-TRS01-GEN01-ZE1204A</div> <div>Back safety scanner</div> </div> <div> <div>3311-HGS-TRS01-GEN01-ZE1204B</div> <div>3311-HGS-TRS01-GEN01-ZE1204B</div> <div>3311-HGS-TRS01-GEN01-ZE1204B</div> </div>											E
F												F
G												G
H	<div> <div>CONTRACTOR</div> <div> <div>insertec</div> <div>Furnaces &amp; Refractories</div> </div> <div>CONTRACTOR dwg number</div> <div>2558-3311-HGS-E-DWG-SPD</div> <div>Rev. A</div> <div>Project Code E2558</div> <div>Project Name ALINVEST CZ</div> <div>Document Title Equipment Spider Diagram</div> <div>Scale 1:1</div> <div>DESIGNED: ANSA</div> <div>DRAWN: JOCA</div> <div>APPROVED: RORI</div> <div>Format A3</div> <div>DATE: 29/11/2025</div> <div>DATE: 29/11/2025</div> <div>DATE: 29/11/2025</div> <div>Sheet 7 OF 7</div> </div> <div> <div>CLIENT</div> <div></div> <div>CLIENT dwg number</div> <div>2558-3311-HGS-E-DWG-SPD</div> <div>Rev. A</div> </div> <div> <div>INITIAL VERSION</div> <div>RORI</div> <div>RORI</div> <div>RORI</div> </div> <div> <div>Revisions description</div> <div>Designed</div> <div>Draw</div> <div>Approved</div> </div>											H
	1	2	3	4	5	6	7	8	9	10	11	12